



High-resolution mesoscale model for professionals

MetWise™ Predict employs a high-resolution numerical weather prediction model that is run on our multi-node computer platform producing forecasts for any location in the United States. This modeling capability delivers products to a user via MetWise Enterprise, MetWise Net or MetWise Live depending on the user's needs.

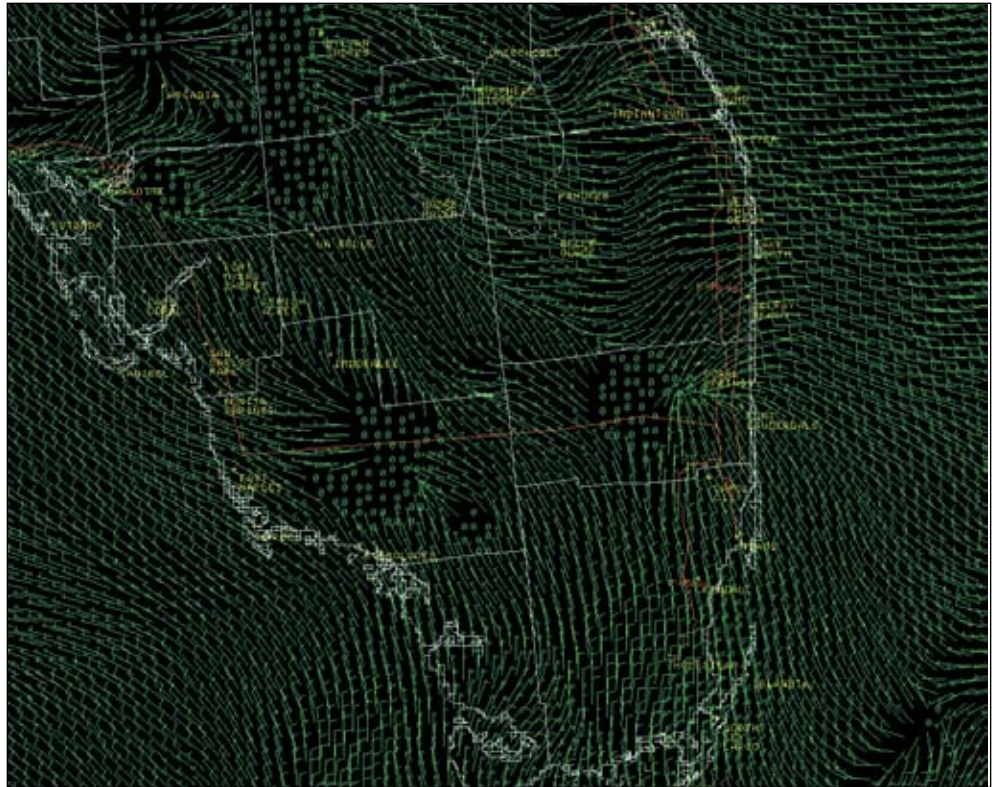
The high-resolution model predicts weather parameters from the surface of the earth up to an altitude of about 40,000 feet at grid points about every 7.5 miles across the country. MetWise Predict will provide a forecast of temperature, humidity, winds, cloud cover, radar reflectivity, precipitation amounts and other parameters that could affect operations. For customer planning purposes, these parameters are forecast every 30 minutes out 12 hours in the future. Every three hours we rerun the model and produce a brand new 12-hour forecast.

MetWise Predict features specialized algorithms for analyzing and forecasting low-level mechanical turbulence, high-level clear air turbulence (CAT) and aircraft icing hazards. These algorithms can help aviation customers plan and avoid areas of potentially dangerous weather for helicopter flights across town or aircraft flights across the country.

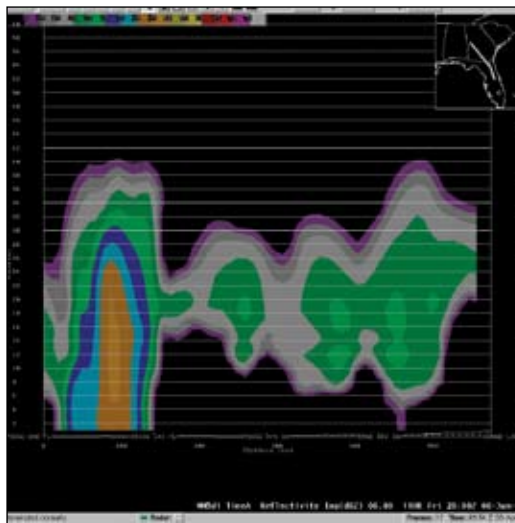
Construction customers will find the high-resolution forecasts of radar reflectivity and precipitation amounts invaluable for planning road paving and other ground-sensitive operations.

Industries relying on roadway surface transportation can use MetWise Predict to indicate locations of potential ice and snow problems as well as plan trips to maximize fuel economy based on wind speed and direction forecasts.

MetWise Predict's skin temperature product and associated algorithms can alert railroads to dangerous situations when track buckling may occur due to extremely high temperatures with maximum amounts of sunshine reaching the tracks.



MetWise Predict can display very high resolution numerical weather prediction model images. Shown here are forecast surface winds over south Florida at 4 km grid spacing produced by the modeling component of MetWise Predict.



Besides looking at data in a plane (horizontal) view, vertical cross-sections of gridded data such as model forecast data can be constructed for any location or along any flight path. Cross-sections are extremely useful, enabling forecasters to analyze data in both space and time simultaneously. This cross-section shows precipitation along a flight path.

For more information, please contact:

Bill Bauman
 ENSCO, Inc.
 321-853-8202
 bauman.bill@ensco.com

05.0189