



## Coordinate, Discuss, Decide

MetWise™ Collaborate brings a collaborative environment with comprehensive meteorological data to all of your decision making processes. MetWise Collaborate can be used in conjunction with MetWise Enterprise to visualize all types of meteorological information and allows you to collaborate across the room or across the world to create and distribute the most effective decision assistance products.

## Collaborative Weather Visualization and Decision Assistance

MetWise Collaborate is a Java tool used to emulate many capabilities in MetWise Enterprise. Users easily create analysis and forecast charts and other decision products. For example users can add text, objects (such as fronts, labels, lines, and meteorological/aviation symbols) and on-map data (such as titles, scales and logos). Templates can be created for standard products. For those applications where real-time collaboration is not essential MetWise Collaborate gives the user complete capability to interactively prepare and distribute graphic products, text products, briefings and other decision products. Slide shows allow users to prepare information for decision makers to use as self-briefing tools.

## Interact with Collaborate Users on Your Network

MetWise Collaborate enables multiple users to synchronize their graphic displays for effective collaboration. Interactive capabilities such as drawing/annotation tools allow sharing of local datasets between sites that are on your network and sharing a MetWise Enterprise server. During a Collaborate session, multiple users can make annotations on the current graphic and all other users will see those annotations and can accept or edit the changes for all others to see. Communication may be over a private network or the Internet. Web pages can be shared and annotated over the Internet. MetWise Collaborate makes it extremely easy

(continued on reverse side)



MetWise Collaborate gives the user complete capability to interactively prepare and distribute graphic products, text products, briefings and other decision products.

to capture real-time data from the MetWise database and post it to the Web. MetWise Collaborate works on operating systems to include Windows 98, Windows NT, Windows 2000, Windows XP, Mac and Linux.

## Voice and Video Capabilities

The interactive graphic capabilities are easily expanded to include collaborative sessions among users with voice and video. MetWise Collaborate can use a local intranet or the Internet to communicate information among users. Typically, these are weather briefings or extended collaboration sessions. Using MetWise Collaborate, the user can create a

05.0175



Innovation Starts Here

[www.extremeforecasting.com](http://www.extremeforecasting.com)

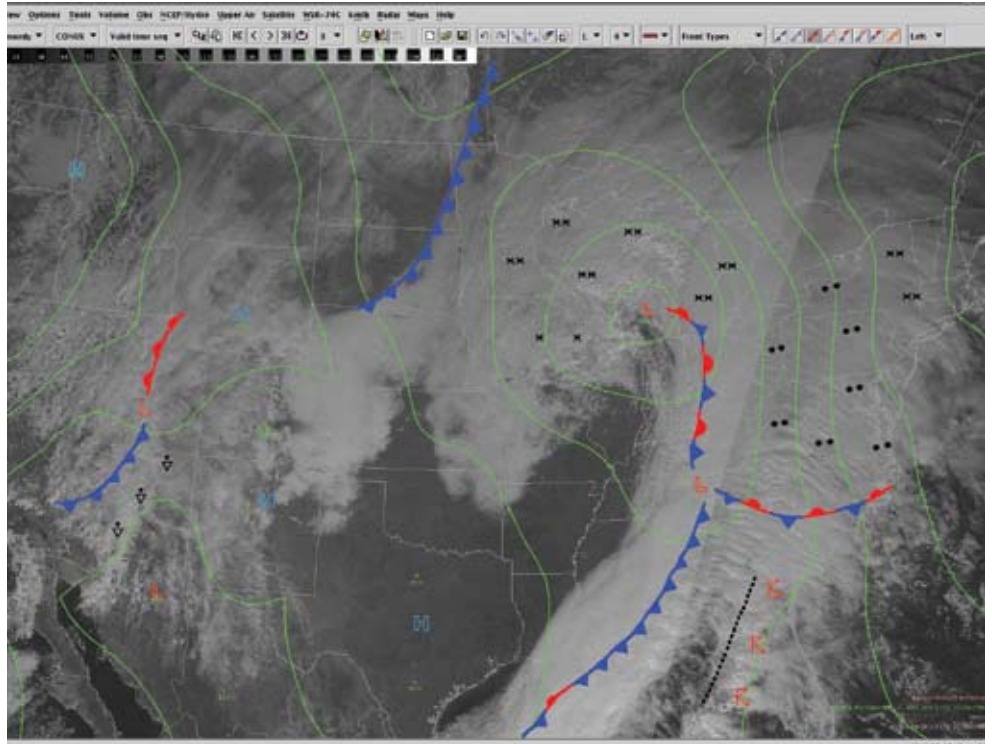
## CORPORATE HEADQUARTERS

3110 Fairview Park Drive, Suite 300  
Falls Church, VA 22042-4501  
703-321-9000 • 800-ENSCO-VA  
info@ensco.com • www.ensco.com

briefing consisting of weather displays and other images. The briefer can control the contents of the display (including annotation) and the animation of multiple frames.

### Features

- Graphical, voice and video collaboration
- Create and deliver customized decision products and briefings
- Coordinate: classroom training, briefing preparation, operational weather forecasts, emergency management, field experiment support, research activities, and more
- Support for several client systems per server
- Emulates many capabilities of MetWise Enterprise
- Sharing of local datasets between sites
- Two simultaneous image overlays with fade between images capability
- Saves images as GIF and JPG
- Printing



The image shown is the result of a collaborative session showing the position of surface isobars, surface fronts and associated weather overlaid on a satellite image.

**For more information,  
please contact:**

Bill Bauman  
ENSCO, Inc.  
321-853-8202  
bauman.bill@ensco.com  
<http://extremeforecasting.com>