



Never search the Internet for weather data again.

MetWise™ Net produces weather graphics and text data and delivers it via any Internet connection.

With an easy-to-use interface, MetWise Net allows you to create custom weather graphics on the fly—the way you want them.

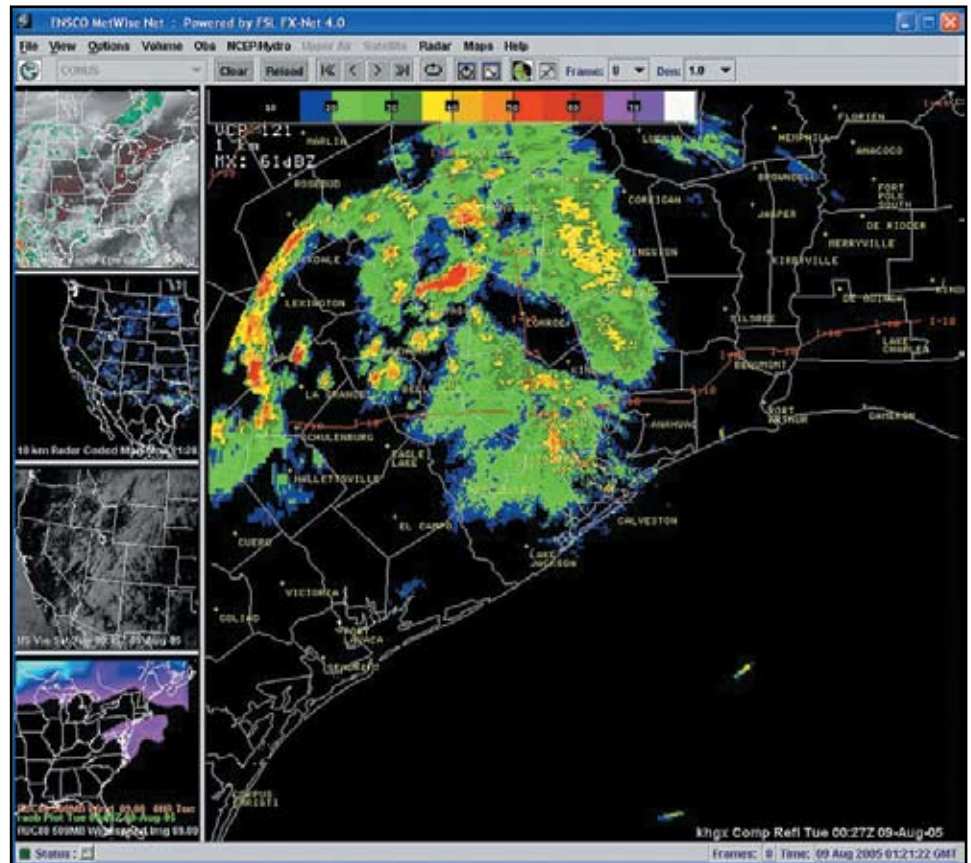
User Interface

The Internet is an important resource for weather information. A standard Web browser provides access to satellite imagery, forecast models, radar and observations but the data is scattered all over the Web. MetWise Net puts all the data and information into one location—the user's computer—with a unique, easy-to-use graphical user interface. The MetWise Net client can load and overlay products of various types and interact with that information.

Features

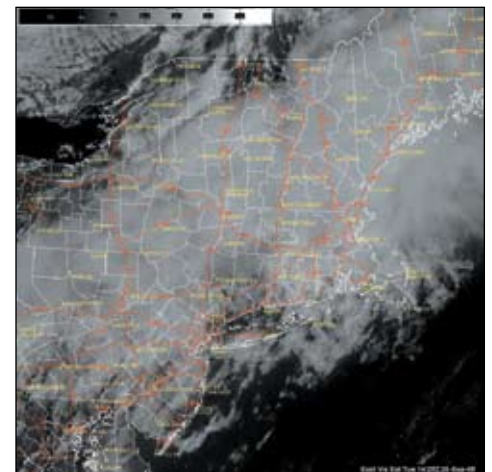
- Animation
- Adding and toggling overlays
- Zooming
- Swapping display windows
- Saving images as GIF and JPEG
- Printing
- Works with PC, Mac and Linux OS

The MetWise Net interface permits a user to display and rapidly switch between five different product windows. The interface uses standard pull-down menus, a primary graphics window and four product storage windows. Once the user loads a product it can be moved to a storage window with one mouse click for quick retrieval. With minimal effort users can adjust the system to display customized scales, add supplementary observational data, and display special customer-oriented forecast models in combination with the existing suites of National Weather Service products.



What You Need Besides an Internet Connection

- PC: 500 MHz, 512 MB RAM, Windows NT, Windows 2000, Windows XP Home or Pro
- Mac: G4 or G5 processor, 512 MB RAM, Mac OS X
- Linux: 500 MHz, 512 MB RAM



(continued on reverse side)

05.0171



Innovation Starts Here

www.extremeforecasting.com

CORPORATE HEADQUARTERS

3110 Fairview Park Drive, Suite 300
Falls Church, VA 22042-4501
703-321-9000 • 800-ENSCO-VA
info@ensco.com • www.ensco.com

Key Products

- High resolution satellite imagery
- All 141 NEXRAD radar sites in the continental U.S. plus Puerto Rico
- Domestic and international weather prediction models
- Hurricane tracks
- Severe storm watches
- ENSCO mesoscale weather prediction model graphics
- Aviation products

How It Works

MetWise Net is a request-based, client-server system operating as an extension of ENSCO's MetWise multi-workstation weather display and analysis system. The ENSCO MetWise server is primarily responsible for time matching of products and for creation and delivery of the product files. The MetWise Net client runs as a Java application on a Windows PC, Mac or Linux. After retrieving user-requested products from the MetWise server via an Internet connection, it allows a user to locally interact with the information. Connections to the server are only maintained during the request and retrieval of products. We are using a wavelet transform to compress model and satellite imagery for optimum delivery speeds—even on a low-bandwidth 56 Kbps modem. The application of this relatively new compression technique is critical to the success of delivering very large-size imagery via the Internet in a reasonable amount of time.

The flexibility of MetWise Net makes it a very popular weather display system for professional meteorologists, researchers, teachers, storm chasers and any weather enthusiast.



**For more information,
please contact:**

Bill Bauman
ENSCO, Inc.
321-853-8202
bauman.bill@ensco.com